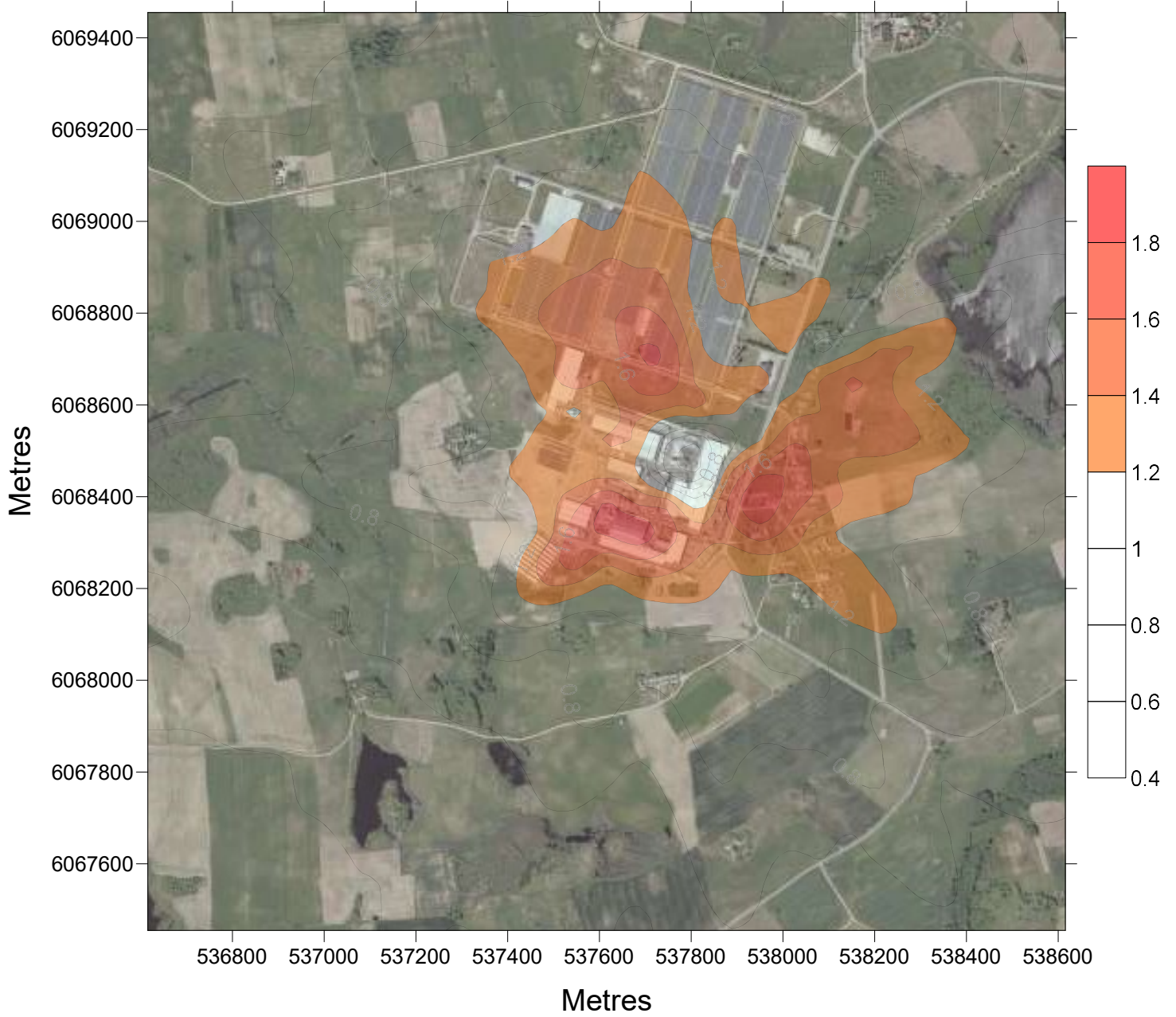


**P100.00 $\mu\text{g}/\text{m}^3$  KD**

**Be fono**

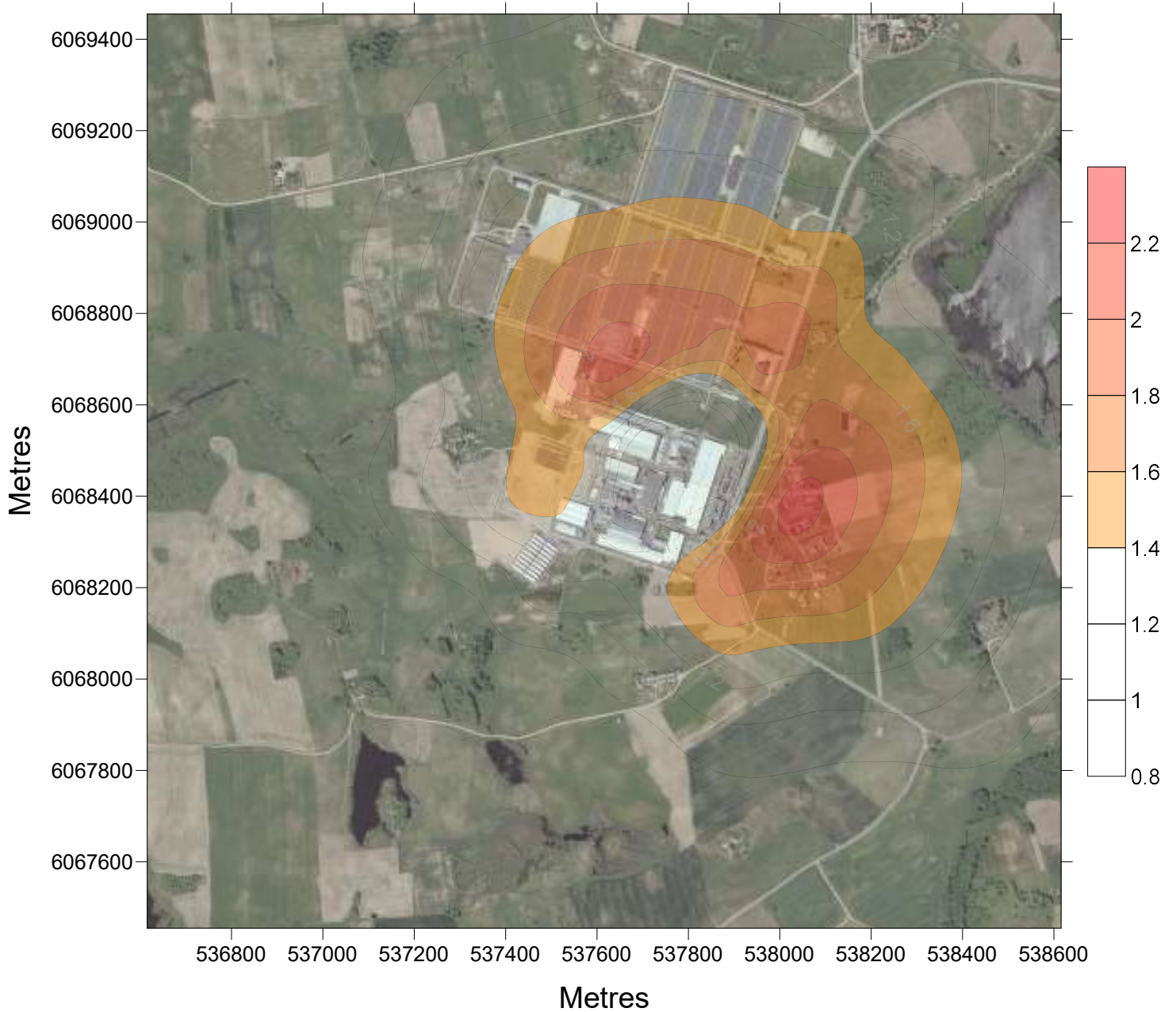
**Z=1.5m - 24hrs**



**P 98.50 $\mu\text{g}/\text{m}^3$  KD**

**Be fono**

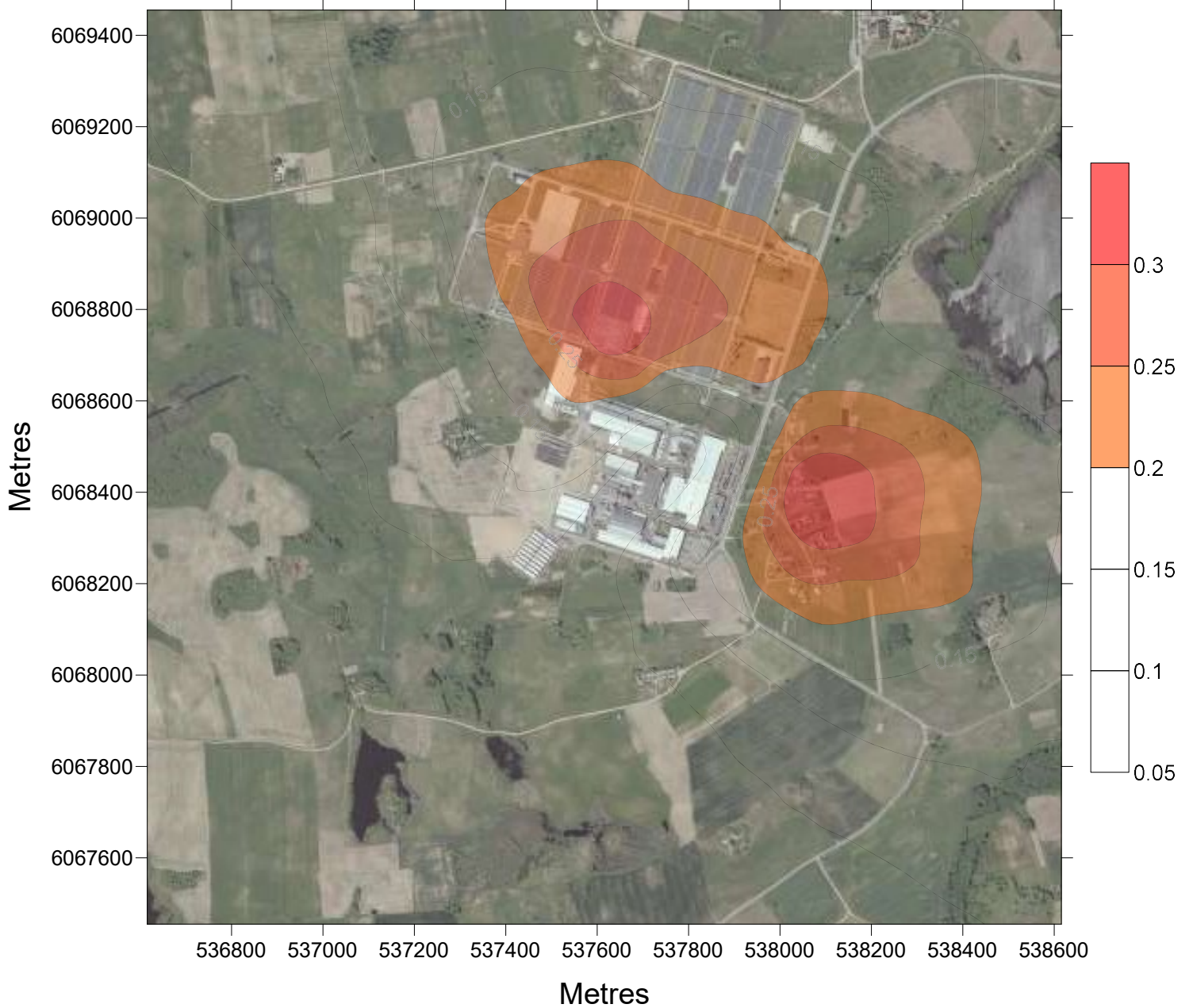
**Z=1.5m - 1hr**



**P 90.40 $\mu\text{g}/\text{m}^3$  KD10**

**Be fono**

**Z=1.5m - 24hrs**





**LTConc  $\mu\text{g}/\text{m}^3$  KD10**

**Be fono**

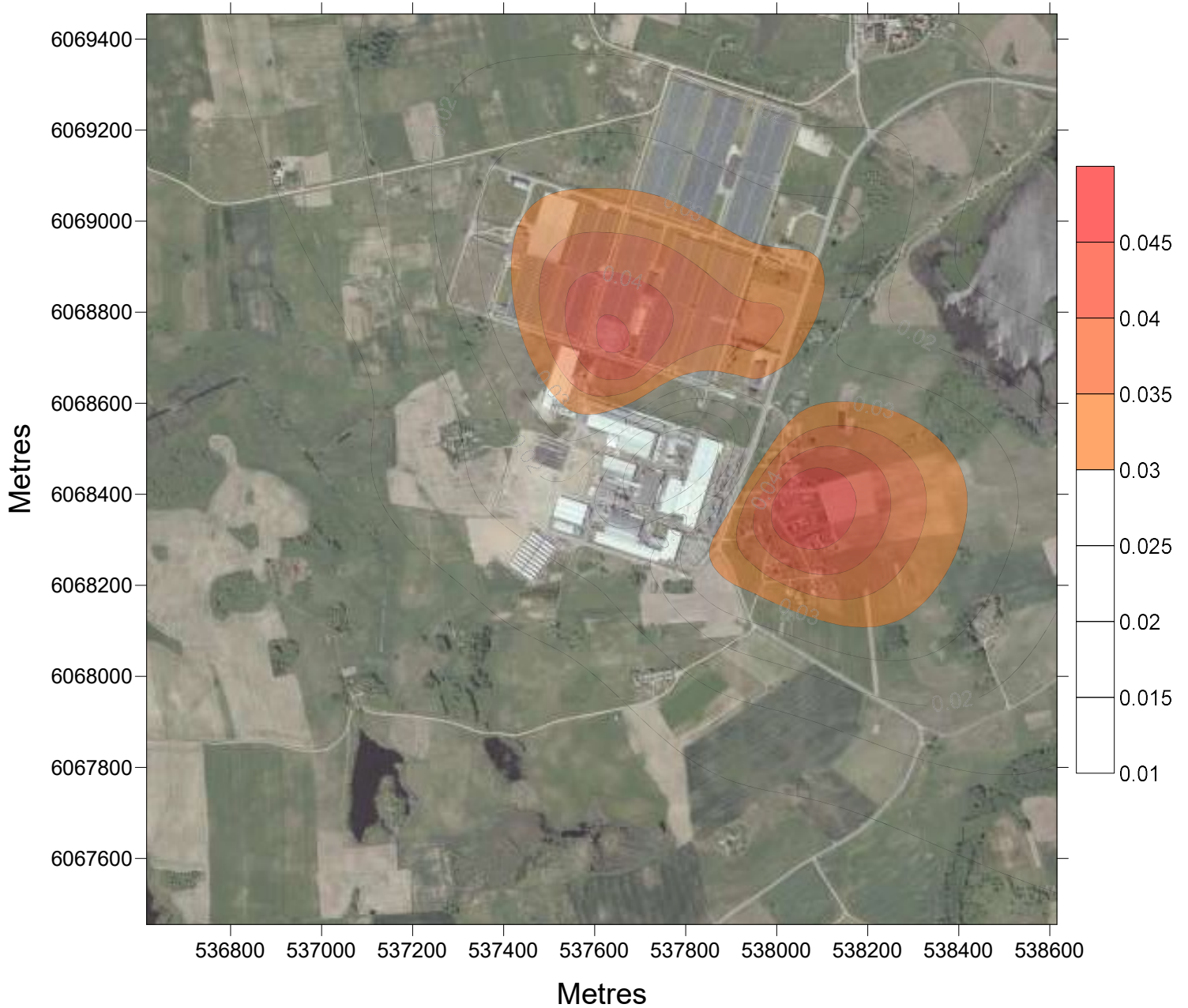
**Z=1.5m - 1hr**



**LTConc  $\mu\text{g}/\text{m}^3$  KD2.5**

**Be fono**

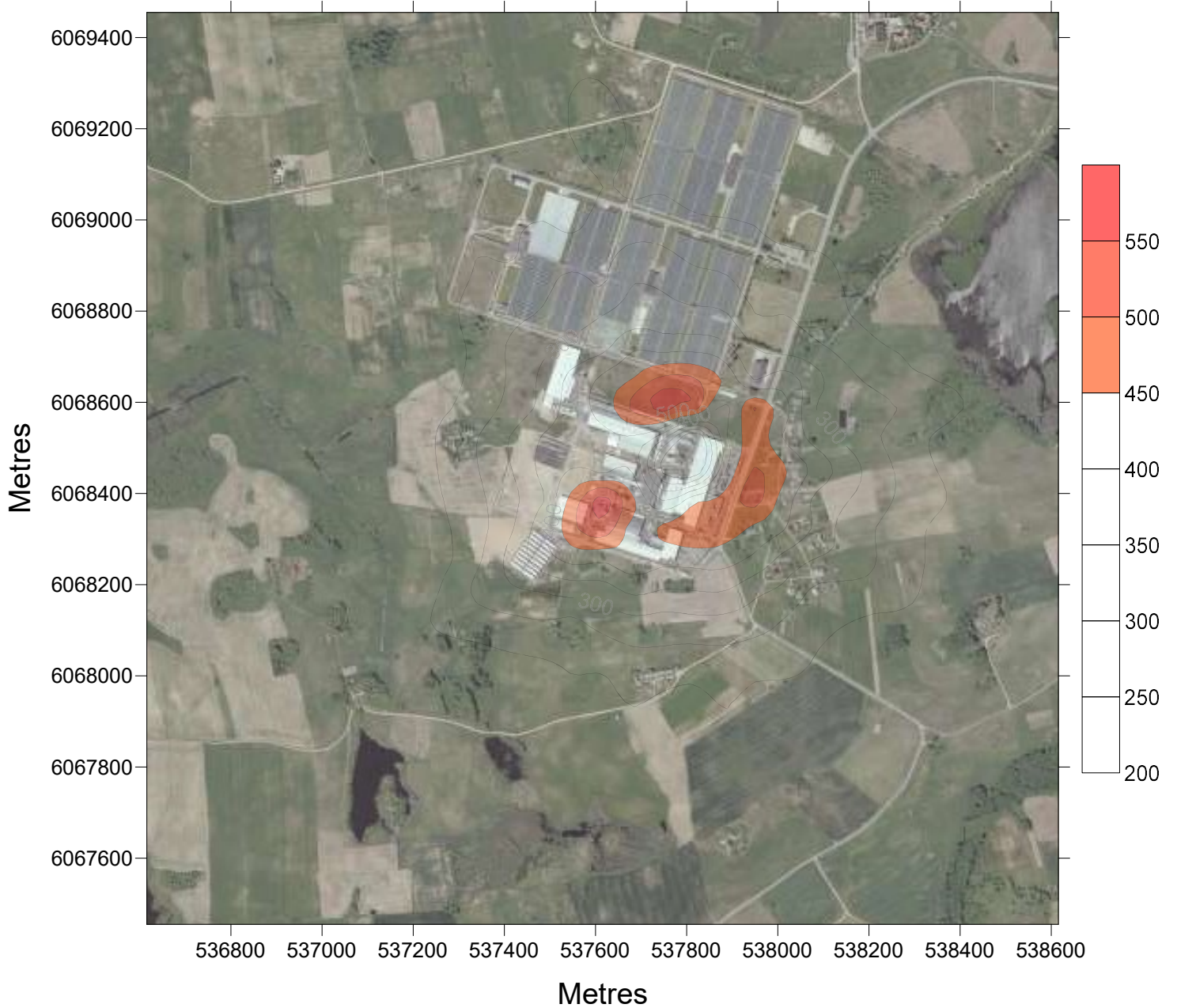
**Z=1.5m - 1hr**



**P100.00 $\mu\text{g}/\text{m}^3$  CO**

**Be fono**

**Z=1.5m r 8hrs**

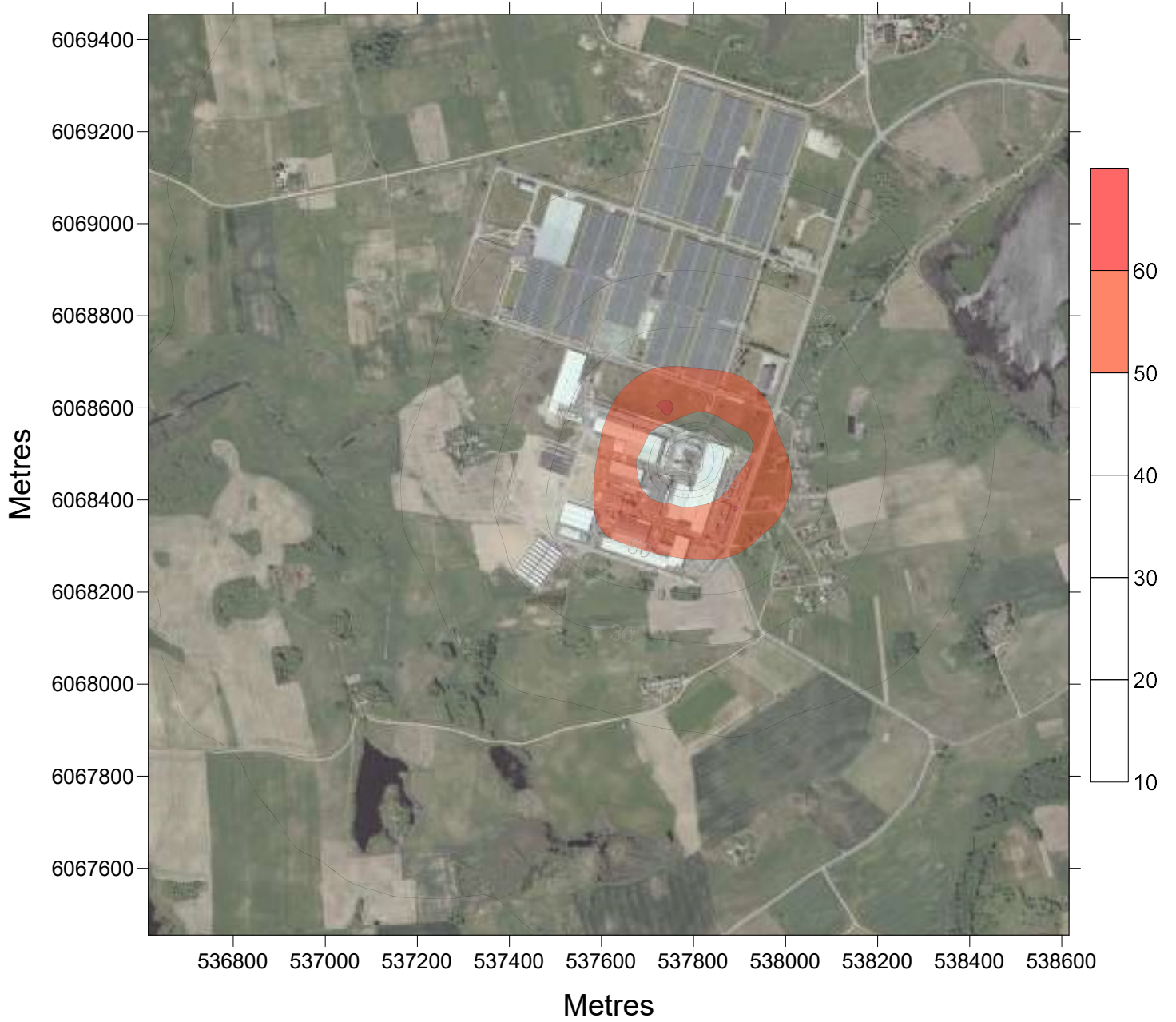




**P 99.80 $\mu\text{g}/\text{m}^3$  NOx**

**Be fono**

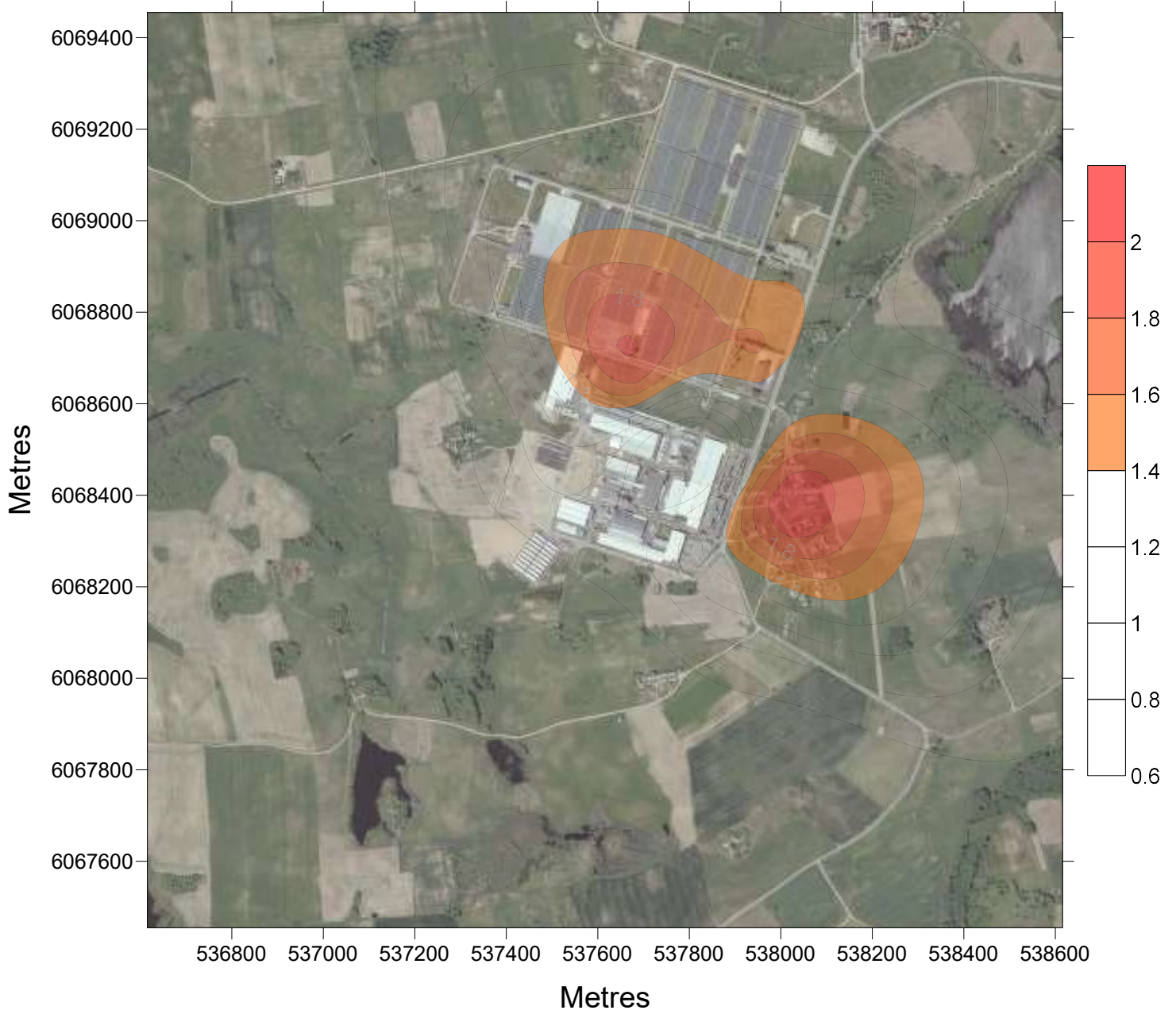
**Z=1.5m - 1hr**



**LTConc  $\mu\text{g}/\text{m}^3$  NOx**

**Be fono**

**Z=1.5m - 1hr**

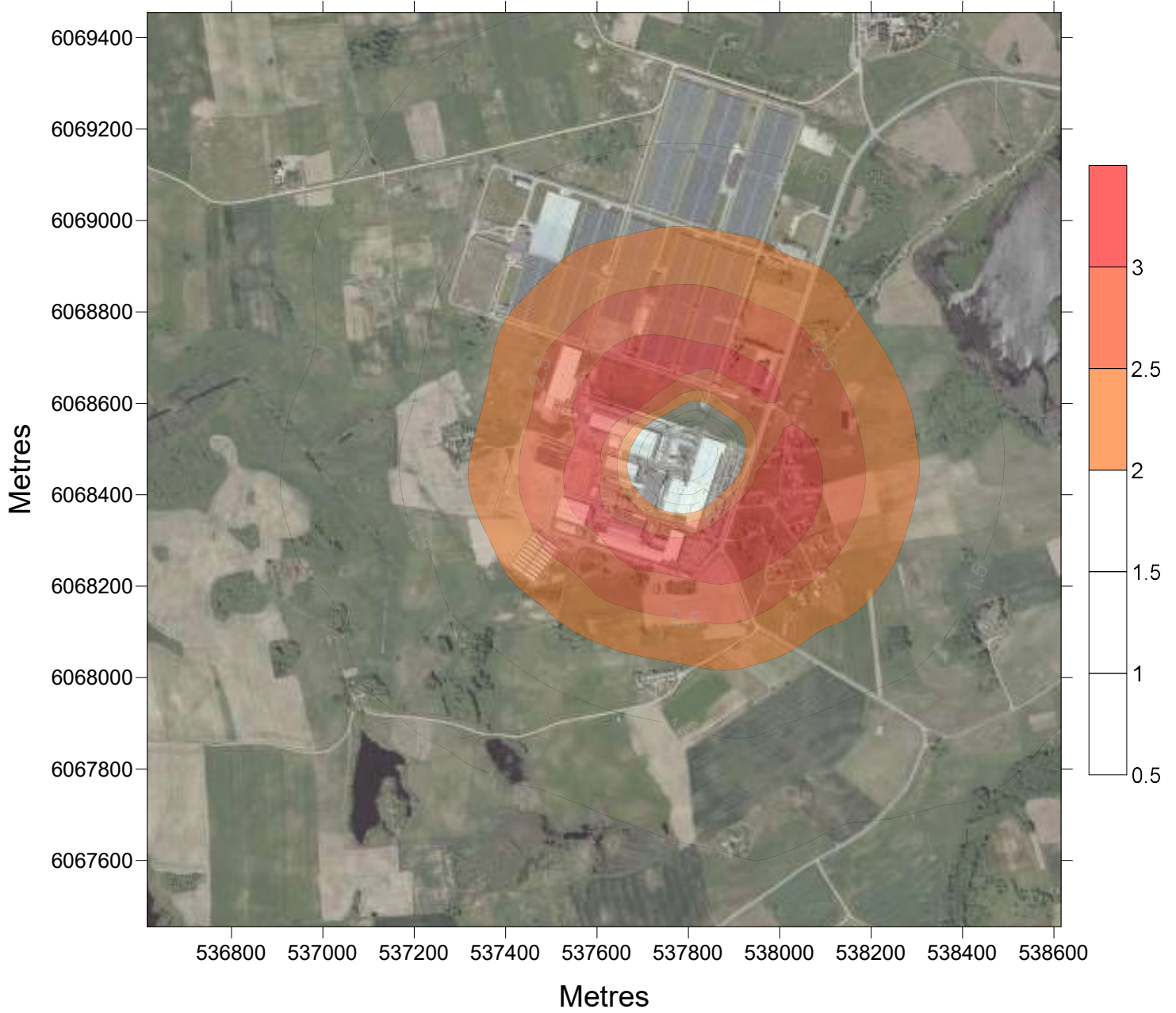




**P 99.70 $\mu\text{g}/\text{m}^3$  SO<sub>2</sub>**

**Be fono**

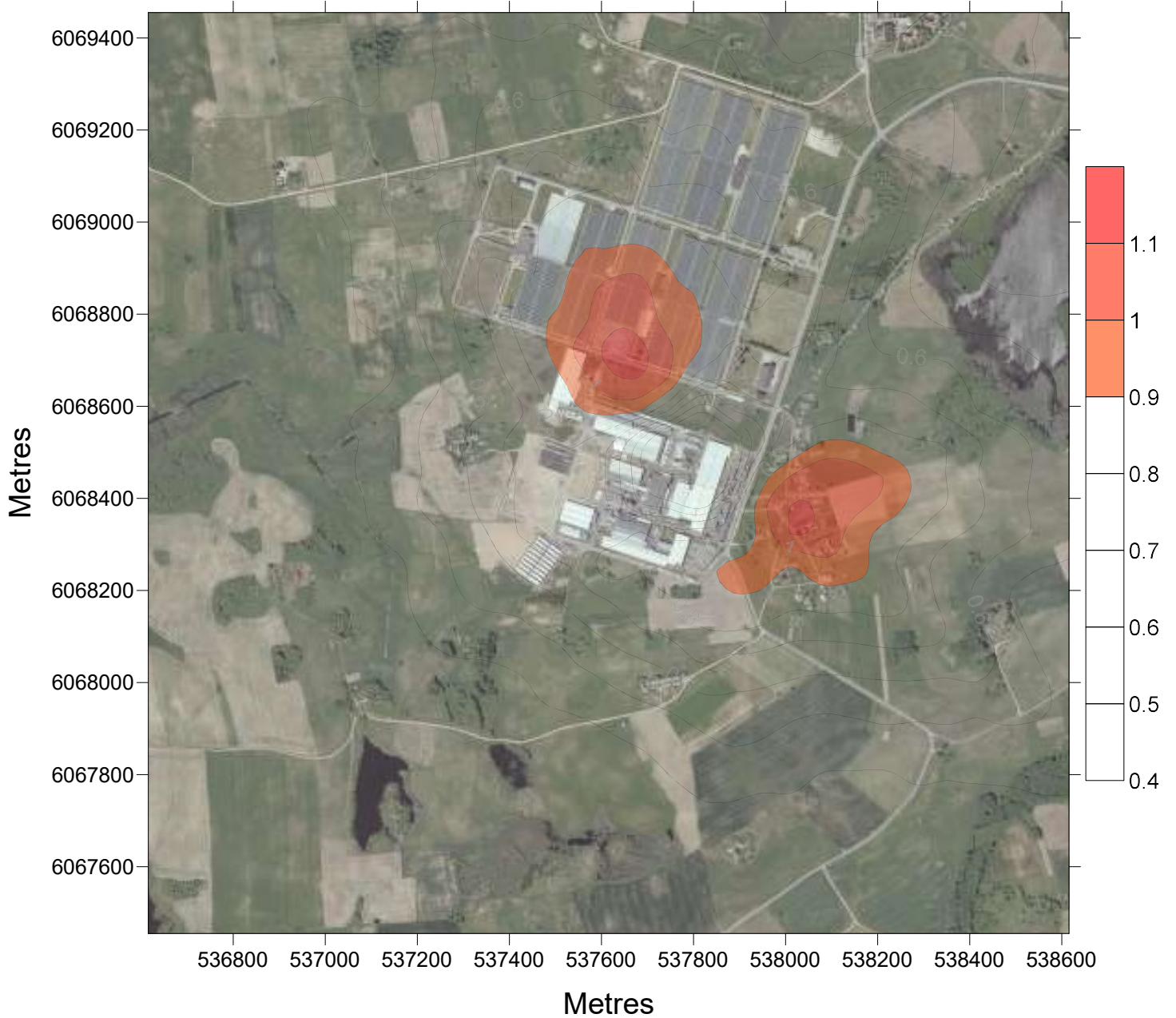
**Z=1.5m - 1hr**



**P 99.20 $\mu\text{g}/\text{m}^3$  SO<sub>2</sub>**

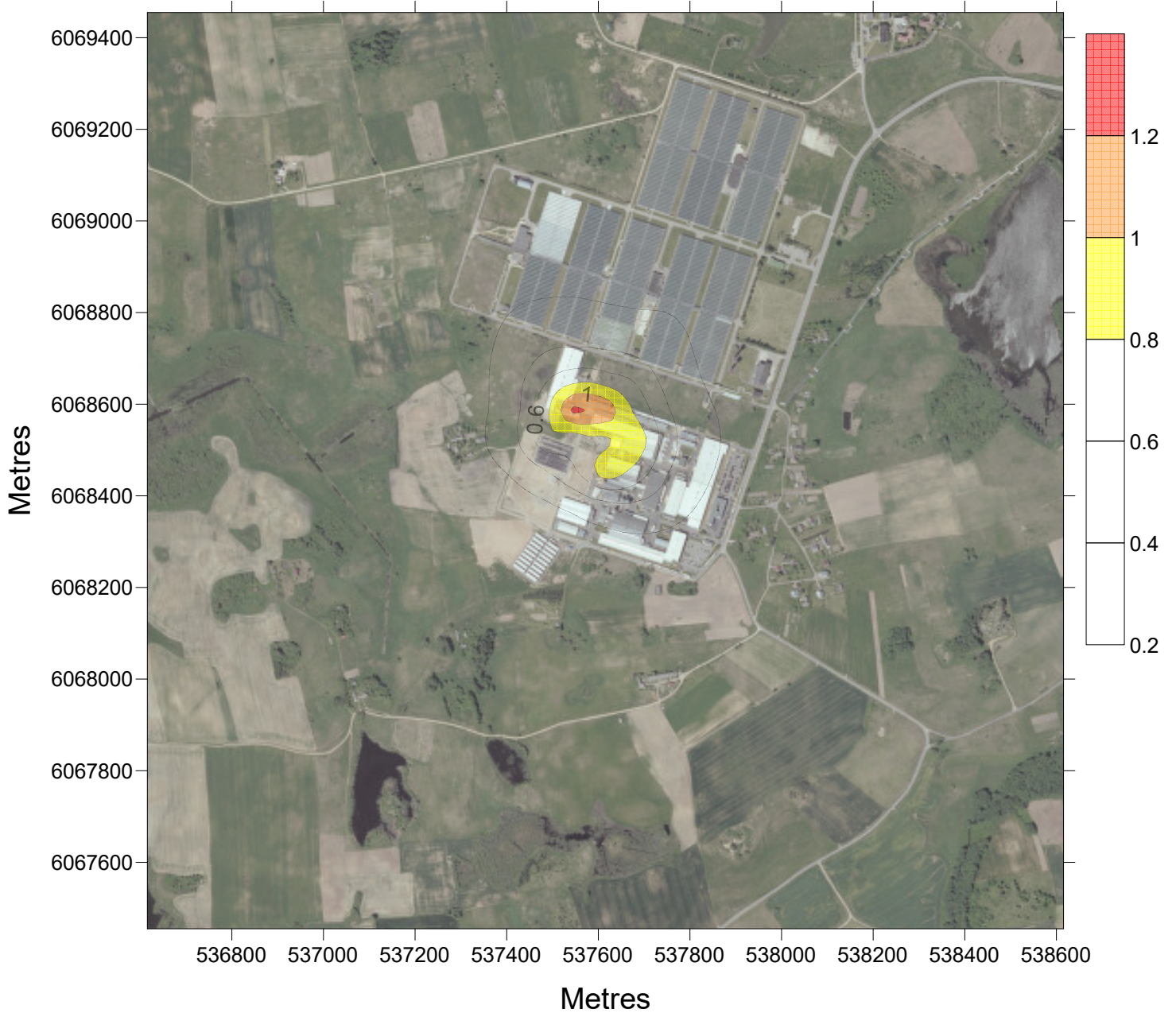
**Be fono**

**Z=1.5m - 24hrs**



**P 98.50µg/m<sup>3</sup> ACETONAS**

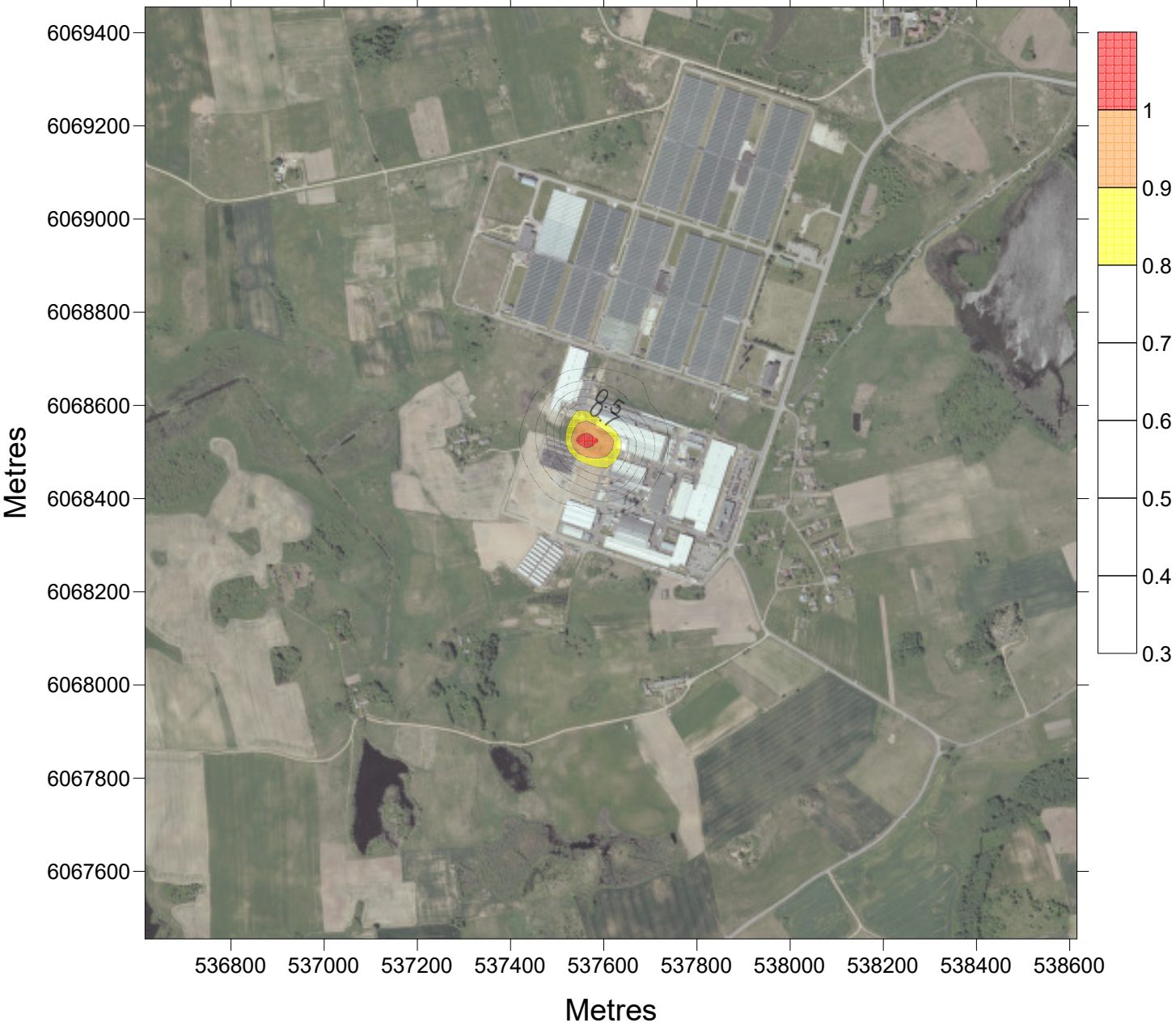
**All sourc Z=1.5m - 1hr**





**P100.00 $\mu\text{g}/\text{m}^3$  ACETONAS**

**All sourc Z=1.5m - 24hrs**



**P 98.50 $\mu\text{g}/\text{m}^3$  BUTANONAS**

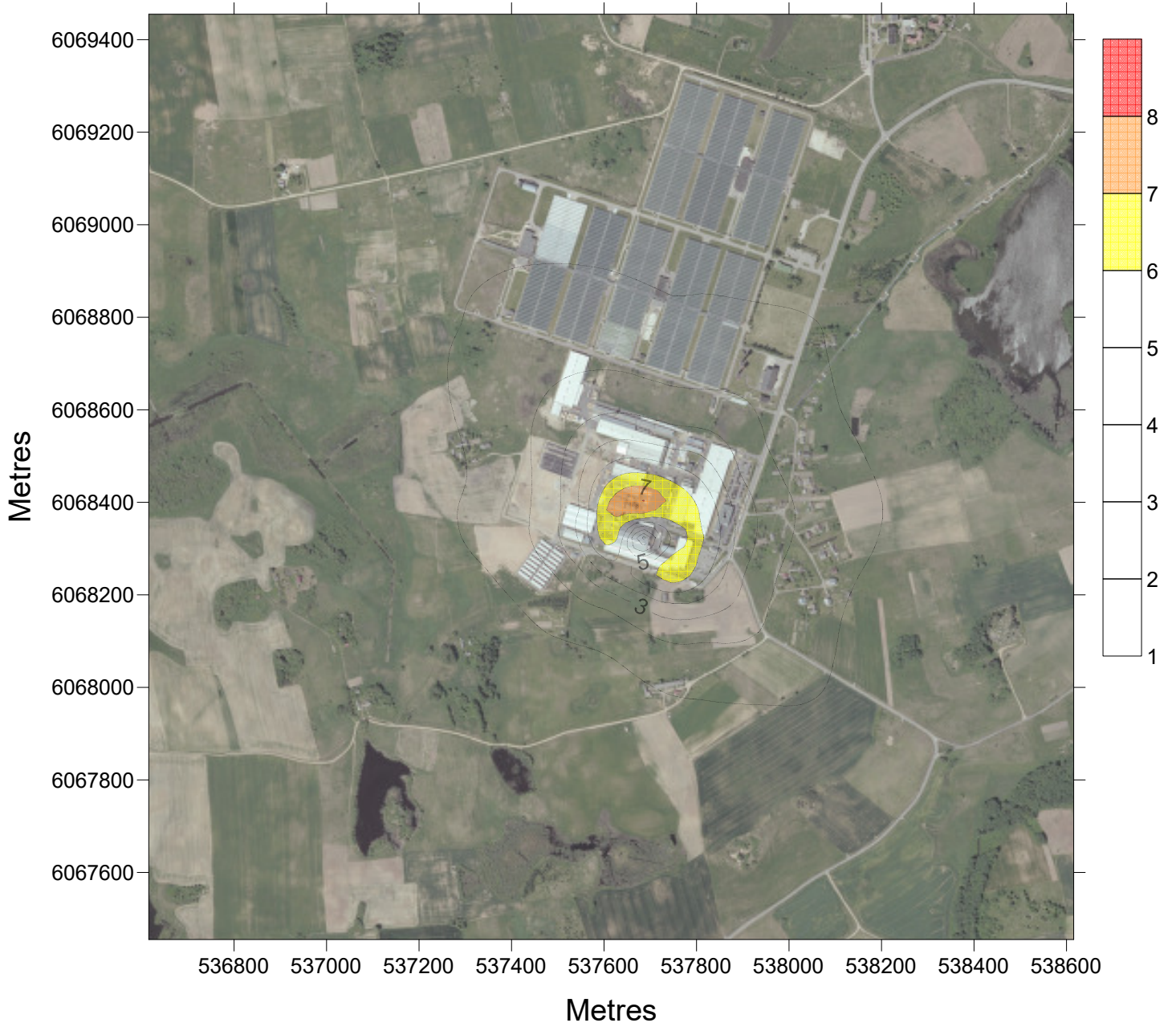
**All sourc Z=1.5m - 1hr**





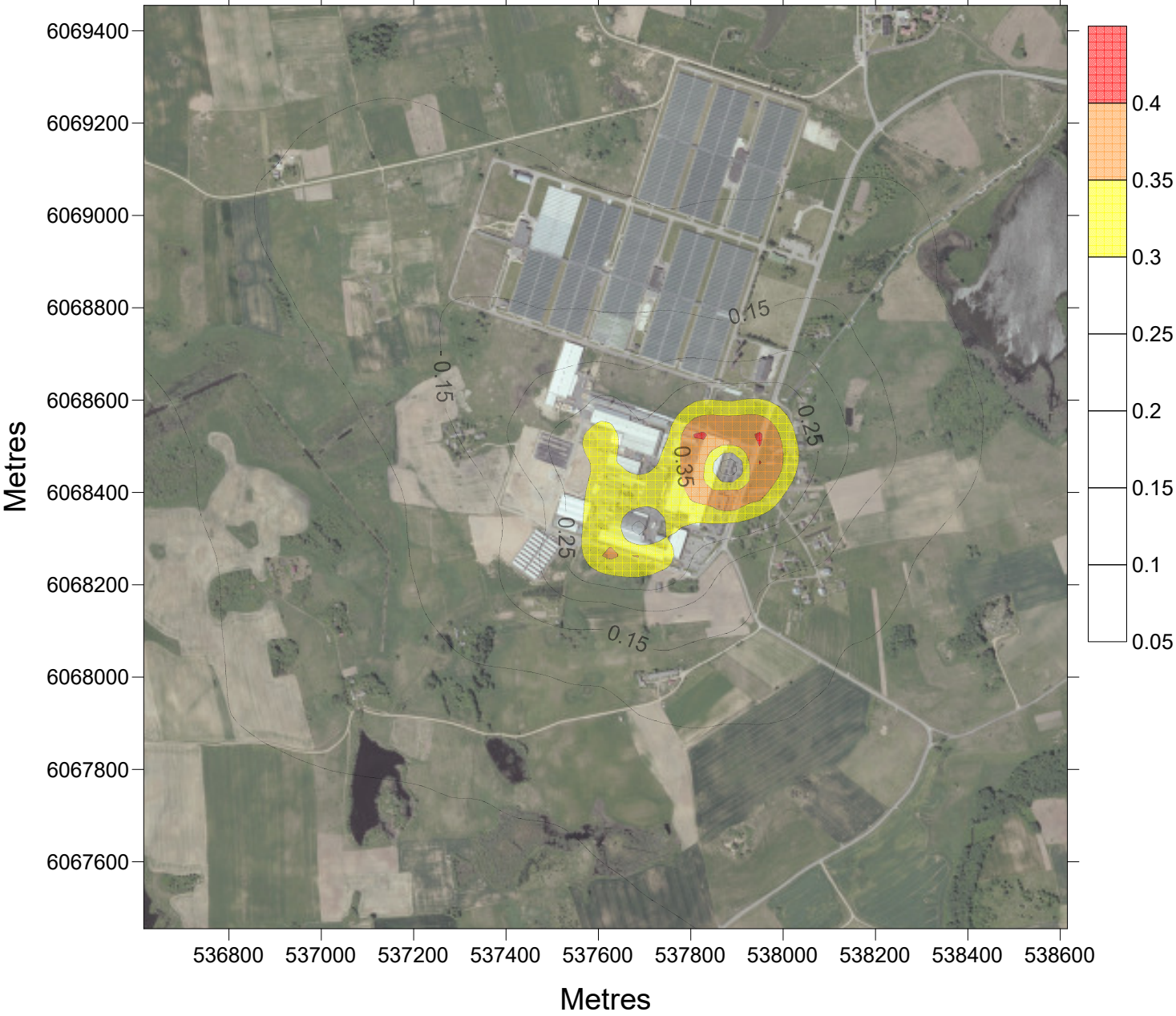
**P 98.50µg/m<sup>3</sup> ETANOLIS**

**All sourc Z=1.5m - 1hr**

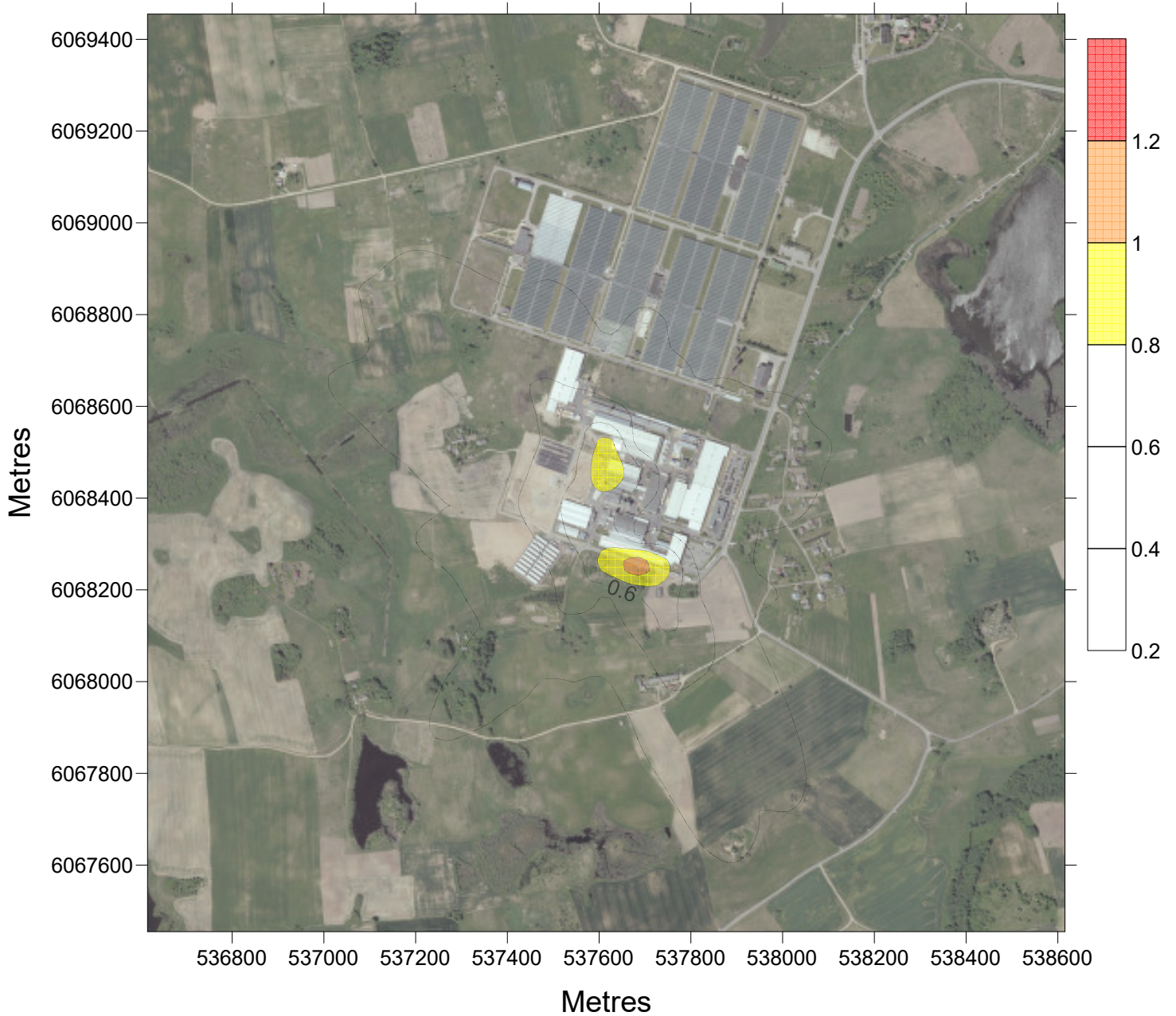




**P 98.50 $\mu\text{g}/\text{m}^3$  FORMALDEHIDAS be fono Z=1.5m - 1hr**



**P100.00 $\mu\text{g}/\text{m}^3$  FORMALDEHIDAS be fono Z=1.5m - 24hrs**

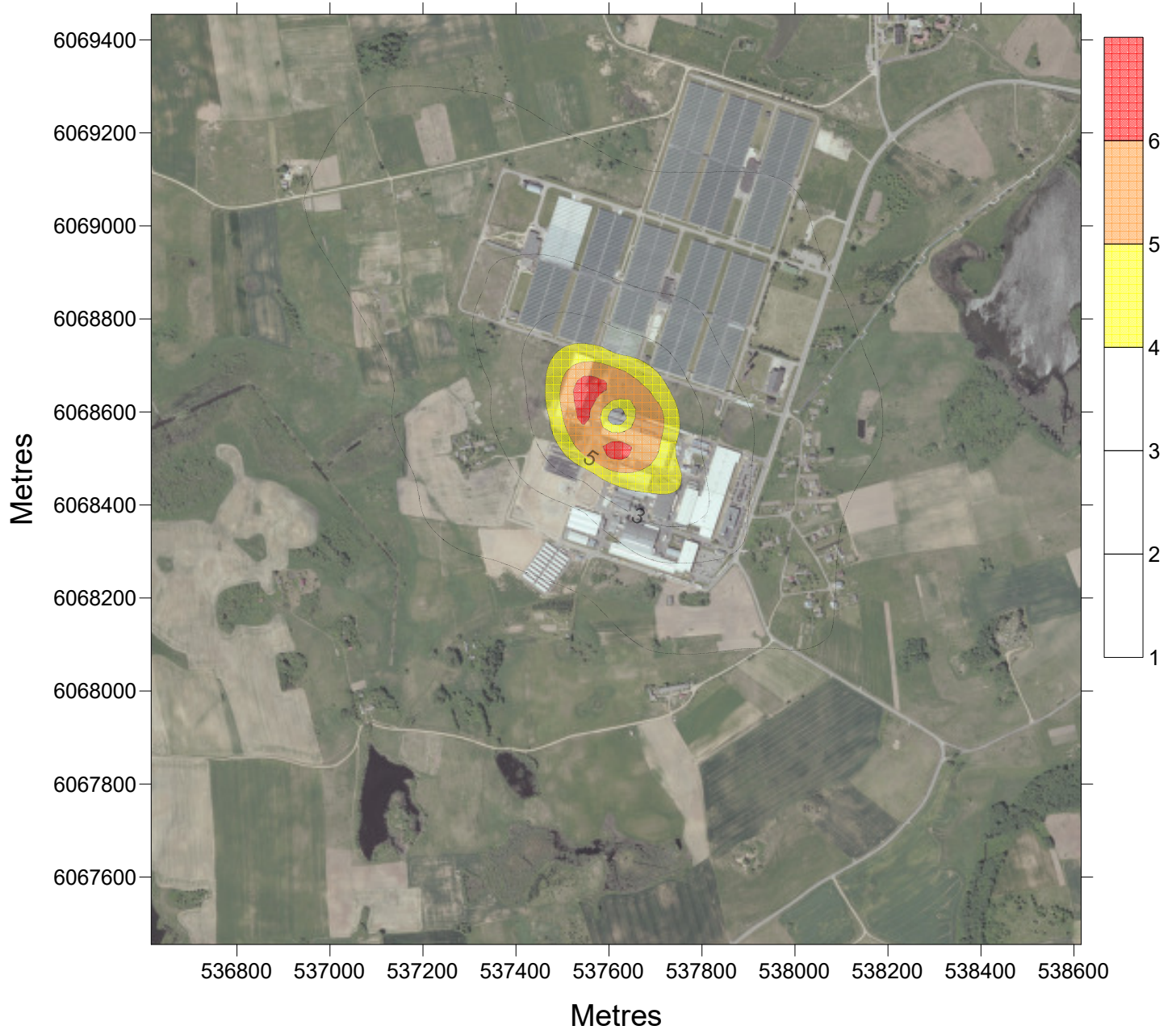




**P 98.50 $\mu\text{g}/\text{m}^3$  IZOPROPANOLIS**

**All sourc**

**Z=1.5m - 1hr**

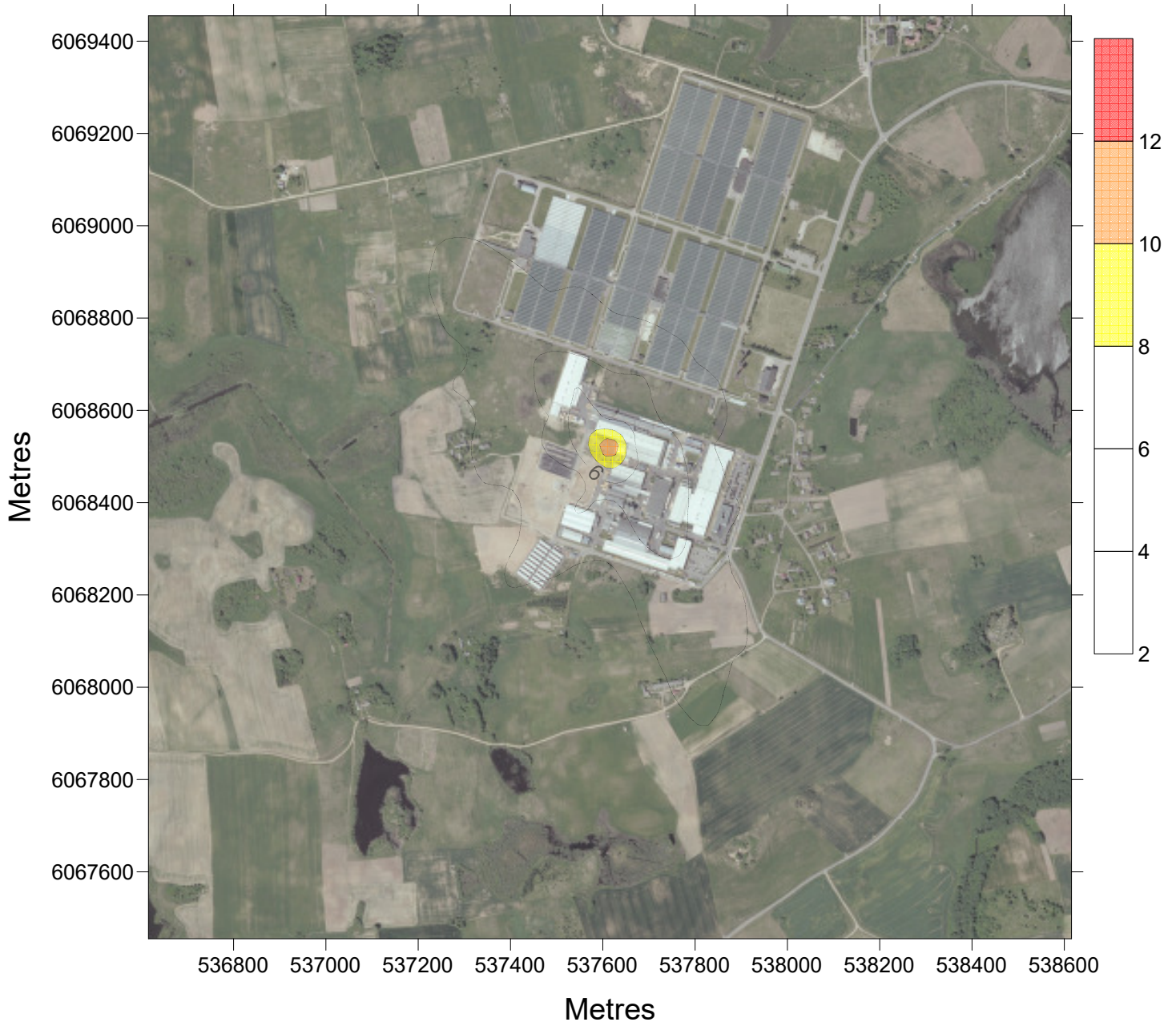




**P100.00 $\mu\text{g}/\text{m}^3$  IZOPROPANOLIS**

**All sourc**

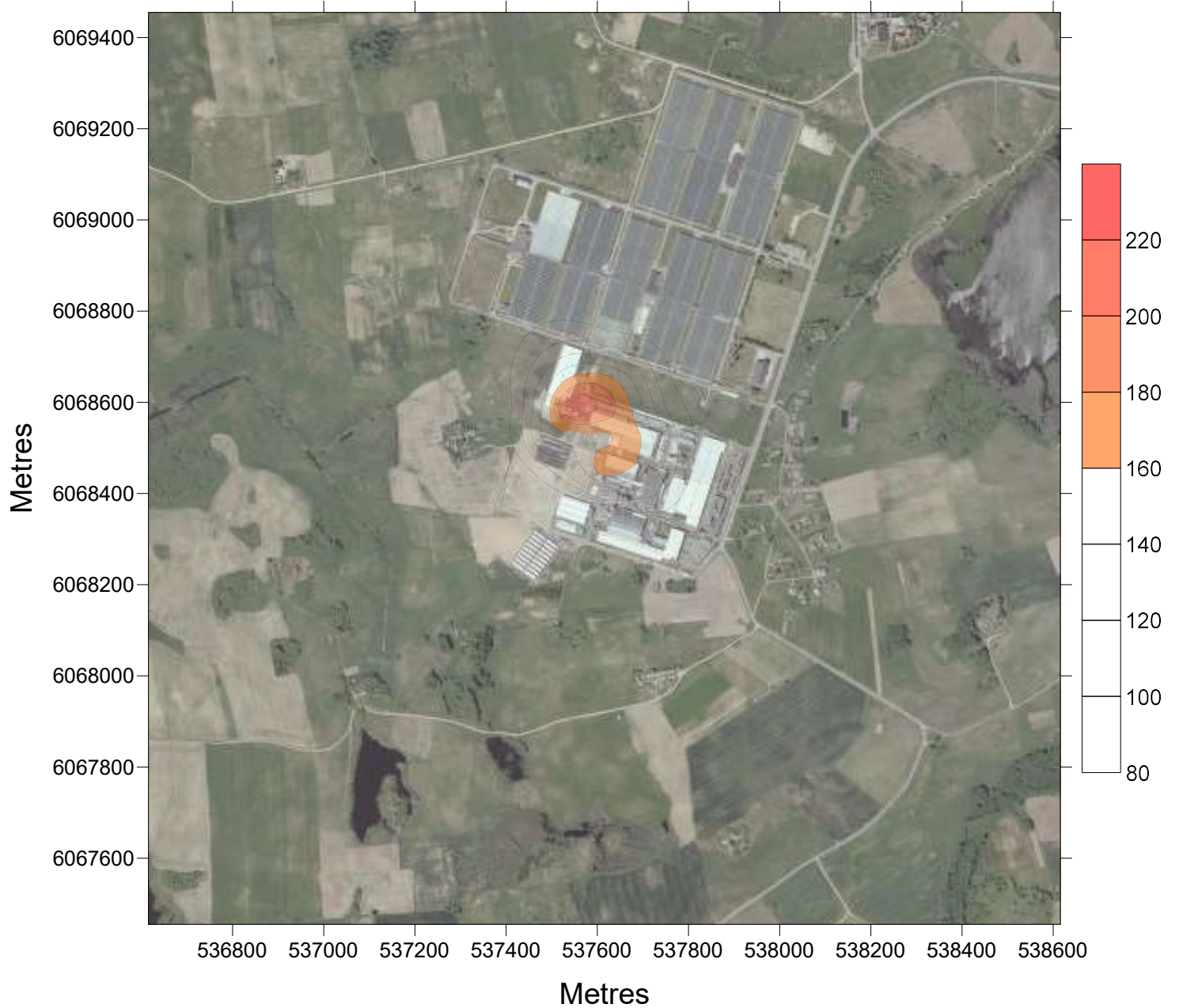
**Z=1.5m - 24hrs**



**P 98.50 $\mu\text{g}/\text{m}^3$  LOJ**

**Be fono**

**Z=1.5m - 1hr**

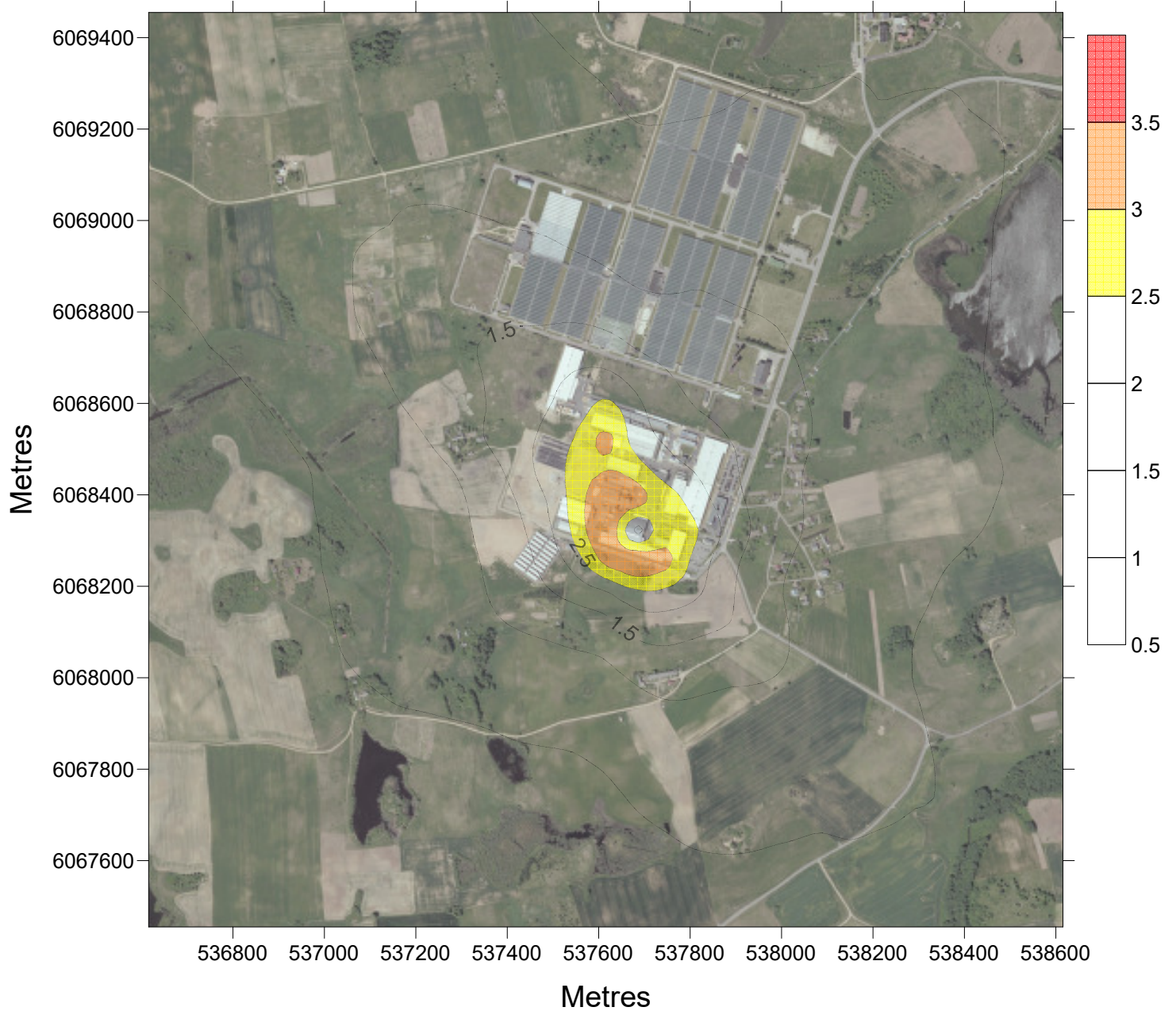




**P 98.50µg/m<sup>3</sup> METANOLIS**

**be fono**

**Z=1.5m - 1hr**

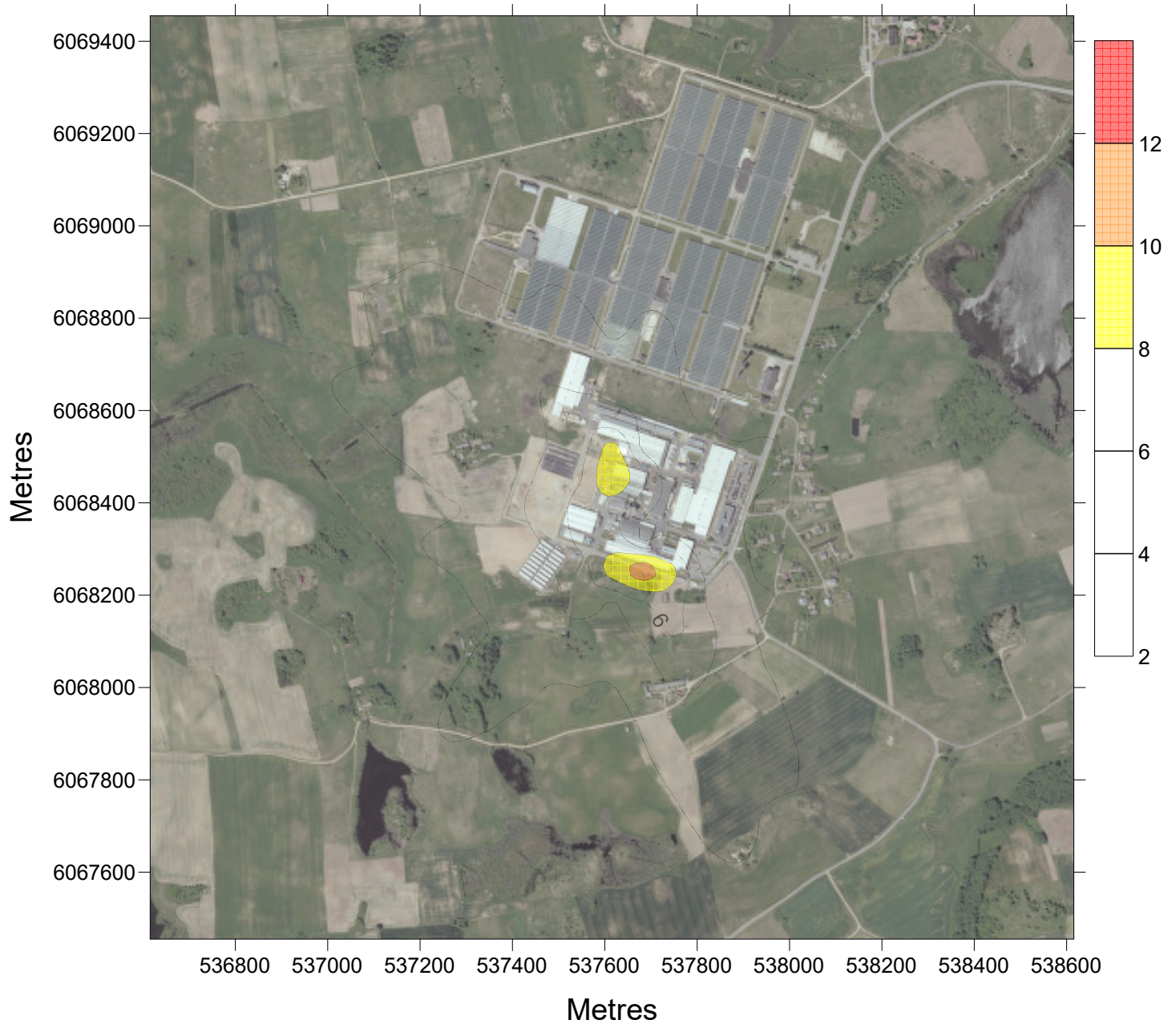




**P100.00 $\mu\text{g}/\text{m}^3$  METANOLIS**

**be fono**

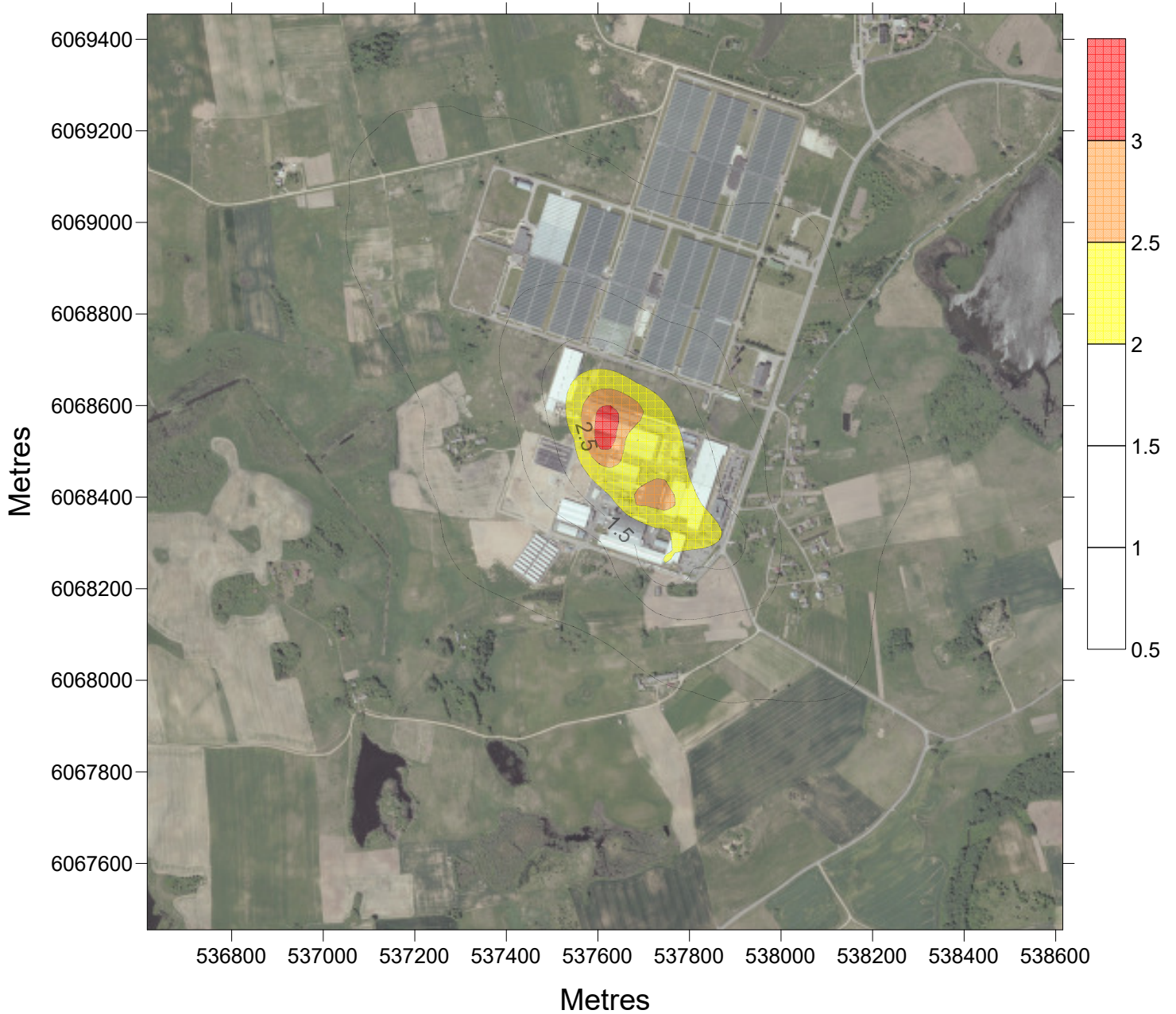
**Z=1.5m - 24hrs**



**P 98.50 $\mu\text{g}/\text{m}^3$  H<sub>2</sub>SO<sub>4</sub>**

**be fono**

**Z=1.5m - 1hr**

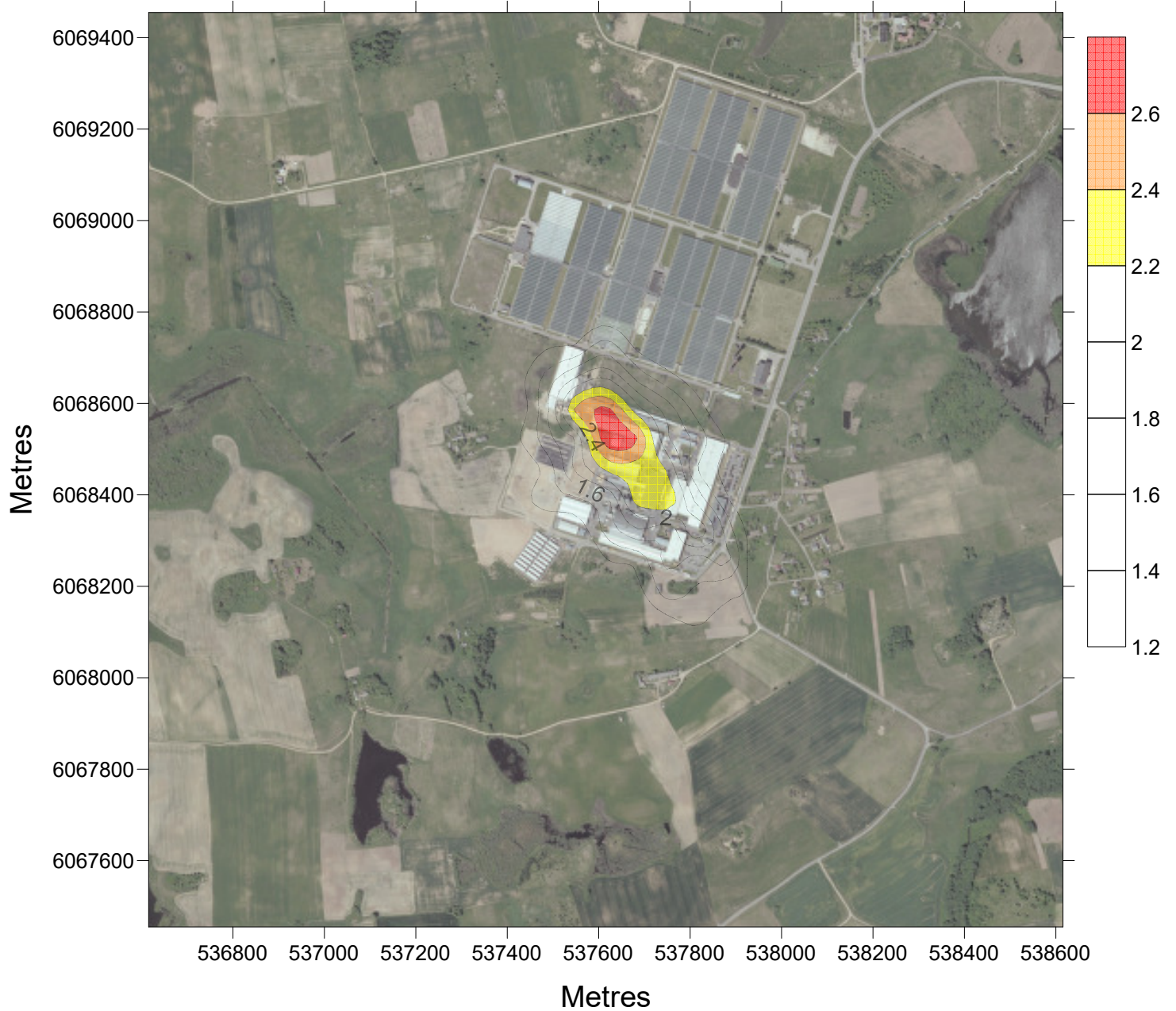




**P100.00 $\mu\text{g}/\text{m}^3$  H<sub>2</sub>SO<sub>4</sub>**

**be fono**

**Z=1.5m - 24hrs**





**P 98.50 $\mu\text{g}/\text{m}^3$  TRIETILAMINAS be fono Z=1.5m - 1hr**



**P100.00 $\mu\text{g}/\text{m}^3$  TRIETILAMINAS be fono Z=1.5m - 24hrs**

